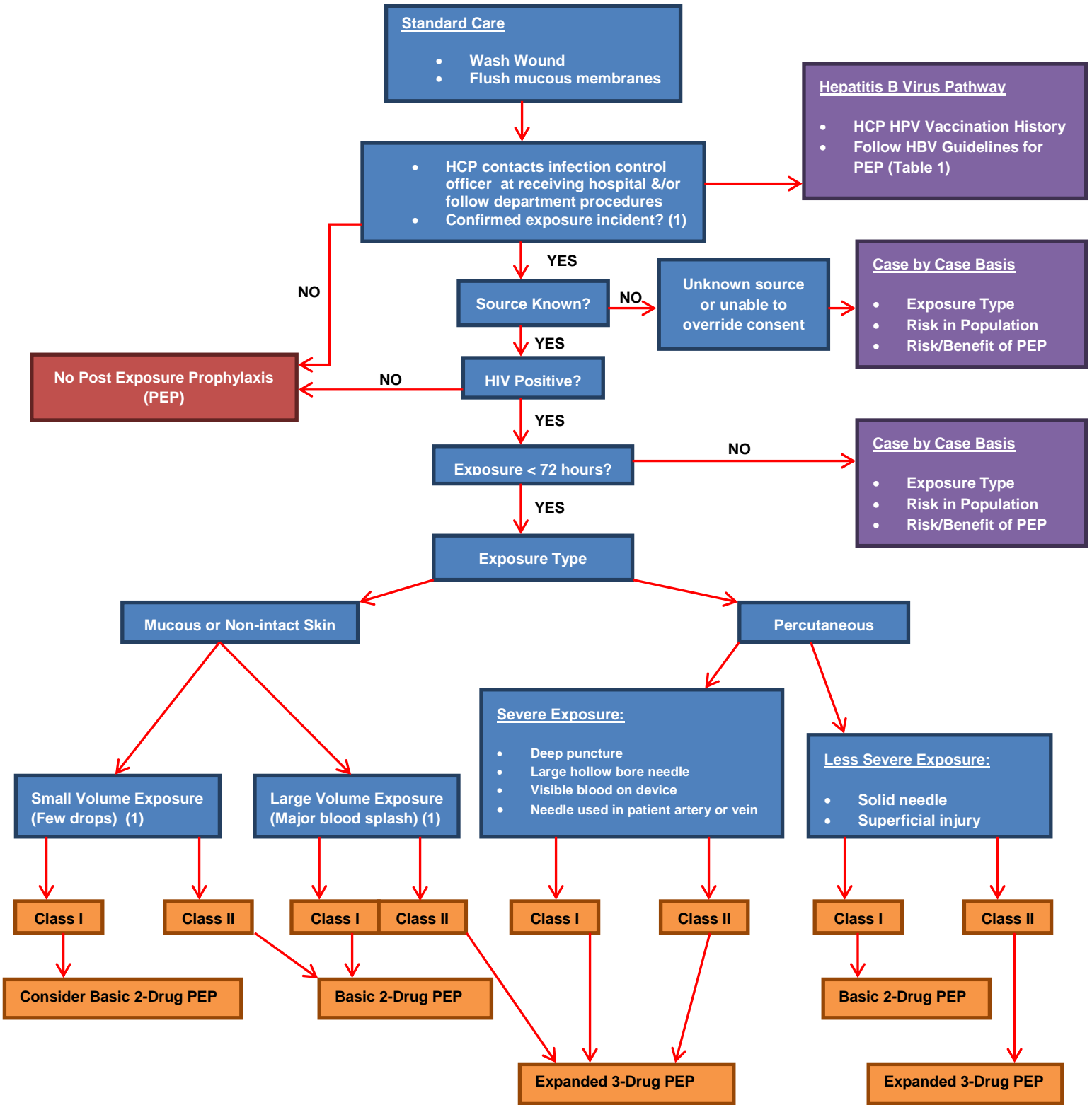


**Health Care Provider (HCP) Occupational Exposure**



|  |   |
|--|---|
| <b>Class I:</b> asymptomatic HIV or viral load <1500 copies/mL   | <b>Class II:</b> symptomatic, AIDS, acute seroconversion, high viral load   |
| <b>Basic 2-Drug PEP:</b><br><ul style="list-style-type: none"> <li>Per U.S. Public Health Service Guidelines (1)</li> <li><a href="http://www.cdc.gov/mmwr/preview/mmwrhtml/rr5409a1.htm">http://www.cdc.gov/mmwr/preview/mmwrhtml/rr5409a1.htm</a></li> </ul> | <b>Expanded 3-Drug PEP:</b><br><ul style="list-style-type: none"> <li>Per U.S. Public Health Service Guidelines (1)</li> <li><a href="http://www.cdc.gov/mmwr/preview/mmwrhtml/rr5409a1.htm">http://www.cdc.gov/mmwr/preview/mmwrhtml/rr5409a1.htm</a></li> </ul> |
| <b>Generally No PEP/Case by Case Basis:</b> Generally no PEP warranted for Unknown Source Cases or Exposure >72 hours, but may consider Basic PEP based on Source Risk Factors: rape, sex for money, IV drug abuse, or men having sex with men.                |   |

(1) = Questions on Type of Exposure and/or Drug Therapy call National Clinicians Post-Exposure Prophylaxis Hotline = 1-888-448-4911