

# **Infection Control and Public Health Weekly Meeting: Summary**

Thursday, March 27 | 12:30 – 1:00 pm

## **Ohio Ashtabula County Identified 10 Measles Cases**

- Nine are linked to an adult male reported last week as the state's first measles case of 2025.
- None of the individuals were vaccinated.
- ODH is working with health departments in Ashtabula and Knox counties to follow up on potential exposures and to promote opportunities for vaccination.

## **Measles in Ohio**

- CDC defines a measles outbreak as three or more related cases.
- Ohio had 90 cases of measles in 2022, when an outbreak in central Ohio totaled 85 cases.
- Ohio had one measles case in 2023 and seven in 2024.

## **Texas Measles Outbreak**

- Two patients in Texas were fully vaccinated; 325 were unvaccinated or their status is unknown.
- 40 people have been hospitalized and one unvaccinated 6-yo child has died.
- Physicians in West Texas have started treating measles patients with signs of liver damage after being given high doses of Vitamin A from cod liver oil supplements.

## **epiENGAGE Measles Outbreak Simulator**

- Simulation considers as the size of the school, the amount of vaccinated students and if there has already been a case of measles.
- epiENGAGE simulator <https://epiengage-measles.tacc.utexas.edu/>

## **Critique of Outbreak Calculator**

- Calculation based on a closed population
- May not take into account household transmission among siblings and vaccine-naive relatives
- Vaccine status is often clustered by household

## **Measles PCR Testing (nasopharyngeal swab)**

- ODH State Lab (may do extra testing to determine if wild type or vaccine related)
- ARUP Reference Lab

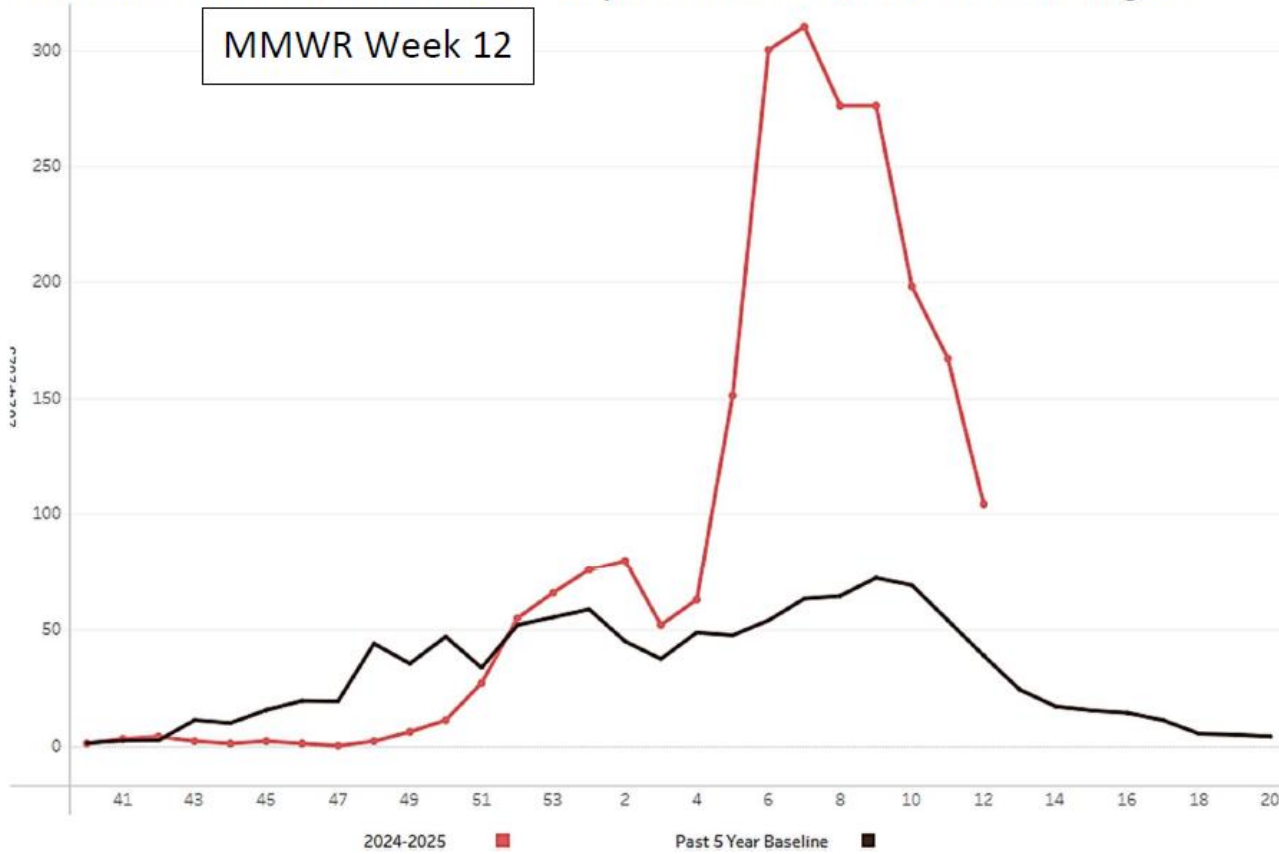
## **FBI: Terrorist threat against hospitals not credible**

- Social media post alleging plans for a coordinated, multi-city terrorist attack on U.S. hospitals in the coming weeks does not constitute a credible threat.

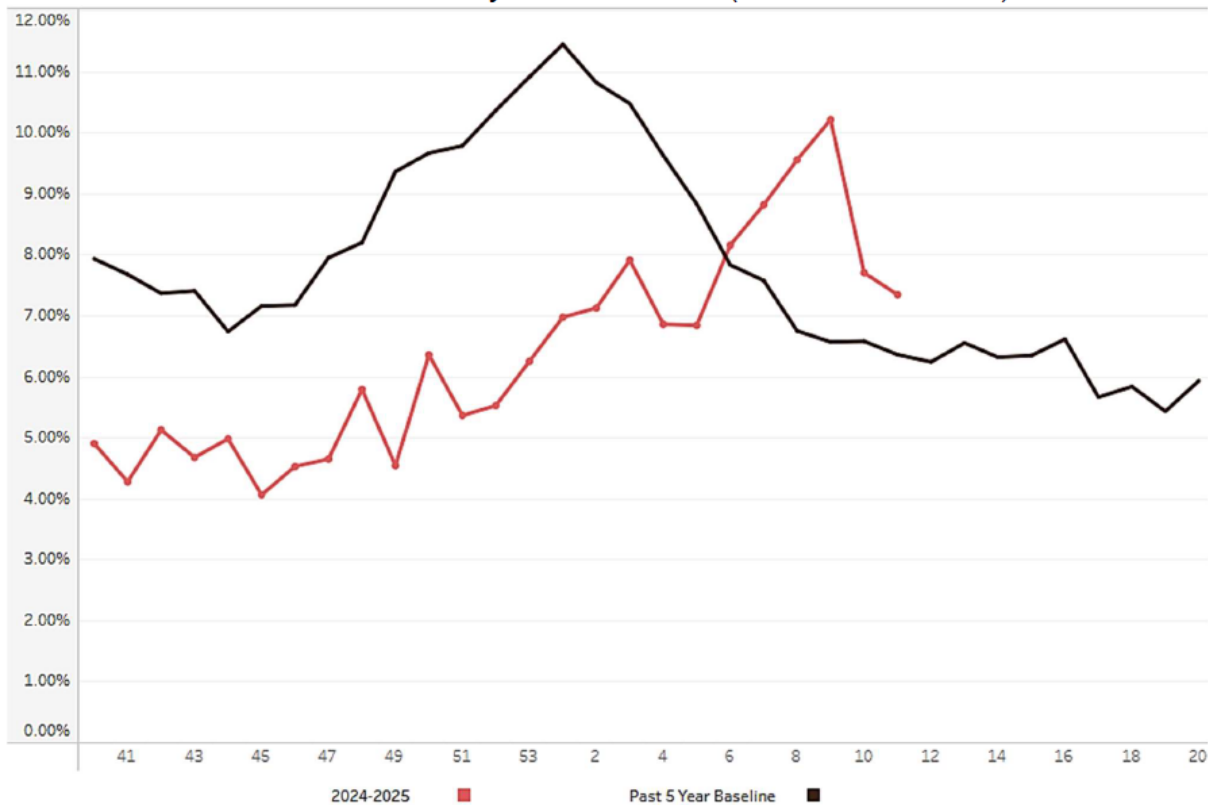
## **Mask Requirements for Hospitals**

- Consensus that hospitals will discontinue influenza mask recommendations after April 1

## Confirmed Influenza-associated Hospitalizations Southwest Ohio Region



## Pneumonia & Influenza Mortality State of Ohio (MMWR Week 12)



# Fever and ILI Specified ED Visits Southwest Ohio (MMWR Week 12)

